



ITYS

Reliable and versatile power protection
from 1 to 10 kVA

Single-phase UPS



GAME 302 A

The solution for

- > Professional workstations
- > Server and corporate networks
- > Storage systems
- > Industrial automation
- > Security systems
- > Telecom systems

Technology

- > VFI "online double conversion"

Certifications



Autonomy configurations

> Flexible autonomy



UPS with
internal batteries
(standard model)

Modular battery
extension with
1 or 2 strings

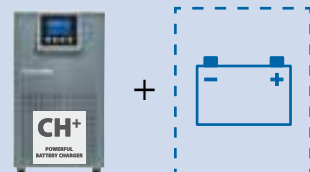
> Extendable autonomy



UPS without
internal batteries
and with powerful
battery charger

N+1 modular
battery extension
with 1 or 2 strings

> Long autonomy



UPS without
internal
batteries
and with powerful
battery charger

External battery
cabinet

High protection and availability

- True online double conversion technology (VFI) assures high availability and total load protection.
- Constant output voltage and frequency regulation makes ITYS compatible with different applications, operating environments and generator sets.
- Automatic bypass supplies the loads in the event of overloads or faults.

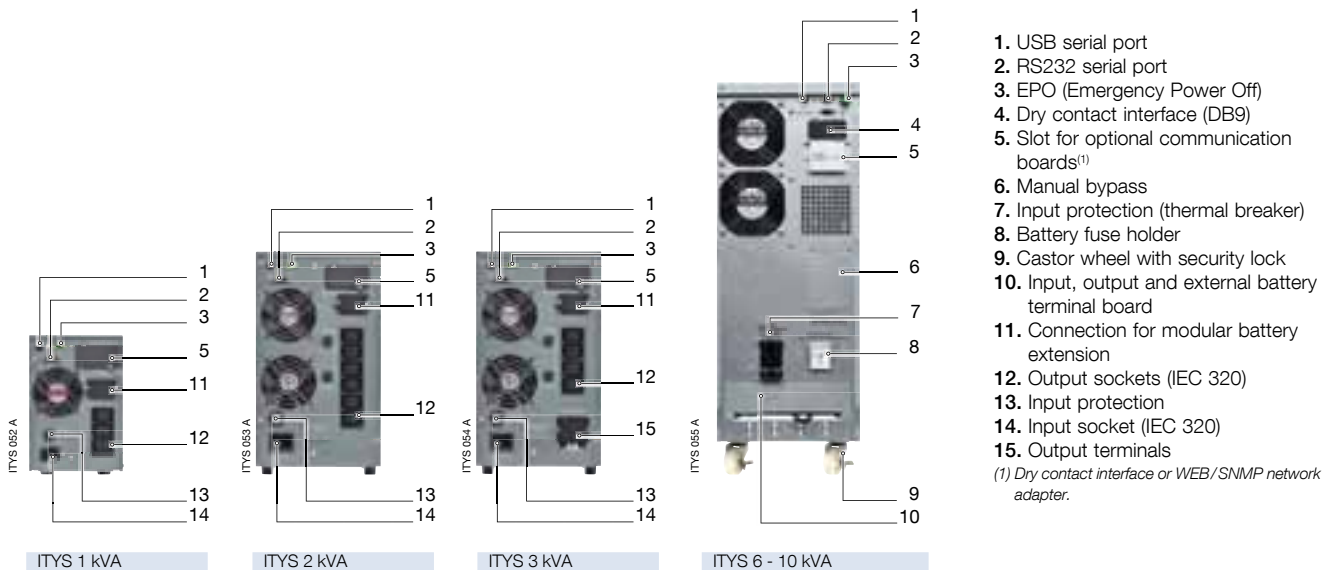
Robust and versatile

- Compact tower UPS system saves space in the operating environment.
- No particular configuration on first startup.
- Easy connections via IEC 320 sockets or terminals.
- Wide input voltage tolerance limits the switchovers to battery mode prolonging the battery life.
- Manual bypass for periodic or emergency maintenance.

Wide battery configurability

- Flexible battery management available for all ITYS models to ensure power supply continuity in the event of an outage.
- Modular battery extension meets a wide variety of power back-up times according to the load to be supplied.
- Modular battery extension enables limitless increases in autonomy, even after installation.
- Powerful battery charger models guarantee constant and reliable operation using external high capacity batteries, therefore providing supply continuity during long outages.

Connections



Technical data

	ITYS - UPS				
Sn	1000 VA	2000 VA	3000 VA	6000 VA	10000 VA
Pn	800 W	1600 W	2400 W	5400 W	9000 W
Input/output	1/1				
INPUT					
Rated voltage	230 V (110÷300 V)			230 V (176÷276 V)	
Rated frequency	50/60 Hz				
Power factor	0.98				
OUTPUT					
Rated voltage	208 / 220 / 230 / 240 V (± 2 %)			208 / 220 / 230 / 240 V (± 1 %)	
Rated frequency	50/60 Hz (45÷55 Hz/54÷66 Hz)				
Overload	Up to 150% for 10 seconds			Up to 150% for 1 minute	
Crest factor	3:1				
Connections	3 x IEC 320 (C13)	6 x IEC 320 (C13)	4 x IEC 320 (C13) + terminals	terminals	
BATTERIES					
Type	sealed lead-acid maintenance free - expected life 3/5 years				
Voltage	36 V DC	96 V DC	240 V DC		
Back-up time ⁽¹⁾⁽²⁾	10 min	17 min	9 min	13 min	9 min
Battery charger ⁽³⁾	8 A			4 A	
COMMUNICATION					
Interfaces	RS232 - USB		RS232 - USB - Dry contact		
Ethernet adapter	NET VISION (TCP/IP & SNMP) optional card				
Local communication software	Local View				
EFFICIENCY					
Online mode	up to 92%				
ENVIRONMENT					
Ambient service temperature	0 °C to +40 °C (15 °C to 25 °C for maximum battery lifetime)				
Relative humidity	< 95% non-condensing				
Maximum altitude	1000 m without de-rating				
Noise level at 1 m	< 50 dBA				< 55 dBA
UPS CABINET					
Dimensions W x D x H	145 x 400 x 220 mm	192 x 460 x 347 mm	260 x 550 x 708 mm		
Weight (models with internal batteries)	13 kg	31 kg	80 kg	84 kg	
Weight (models without internal batteries)	7 kg	13 kg	25.5 kg	29.5 kg	
Degree of protection	IP20				
STANDARDS					
Safety	IEC/EN 62040-1, AS 62040.1.1, AS 62040.1.2				
EMC	IEC/EN 62040-2, AS 62040.1				
Product declaration	CE, RoHS (E2376)				

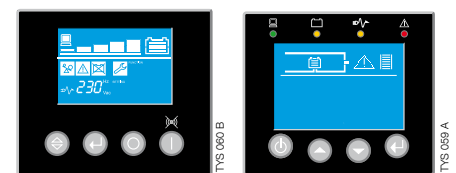
⁽¹⁾ @75 % of rated load (models with internal batteries) PF 0.7

⁽²⁾ Models with internal batteries

⁽³⁾ Models without batteries

Advanced communication

- Wide range of communication protocols available as options (including JBUS, TCP/IP and SNMP) for integration into LAN networks or building management systems (BMS).
- RS232 advanced connection for the management of power supply and local/remote shutdown of the applications with Windows®, Linux and Mac OS X® systems.
- USB port for direct interfacing with Windows® and Mac OS X® systems.
- Clear and uncluttered LCD interface for easy UPS monitoring, even for less specialist users.



ITYS 1-2-3 kVA

ITYS 6-10 kVA

Local and IP network management solutions

- LOCAL VIEW: ideal point-to-point software for UPS monitoring and shutdown of Windows®, Linux and MAC OS X® operating systems (standard for all models).
- NET VISION: professional network adapter for monitoring and controlling UPS units from a remote location (option for all models).